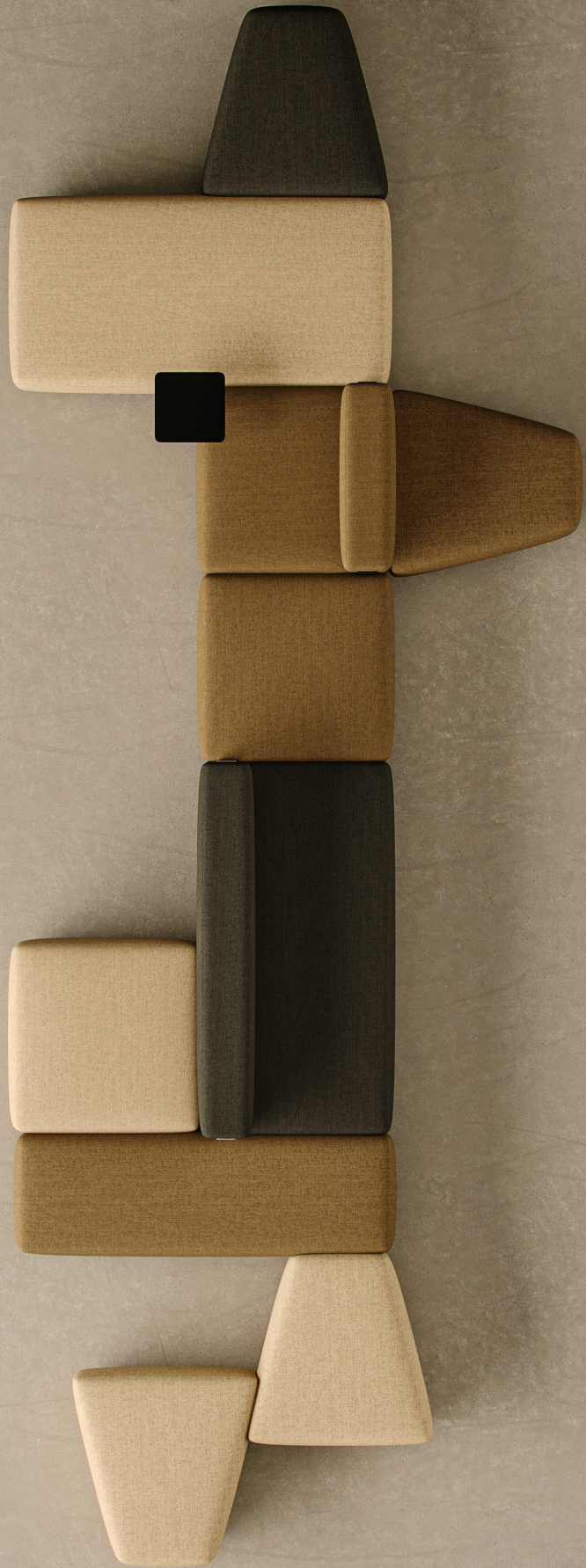


TIME28
TIMELESS HOUSE



hans



hans

- Inspired by Hans Arp's *Elementary Construction* (1916), this collection is grounded in the idea that form emerges from the relationship between simple volumes.
- As in Arp's work, each element is autonomous, yet gains meaning when brought together.
- The modules are freely arranged in space, creating flexible compositions for working, meeting, or relaxing.
- The collection proposes an essential system in which function does not dictate form - form builds function.





COMPOSITION
SPACE

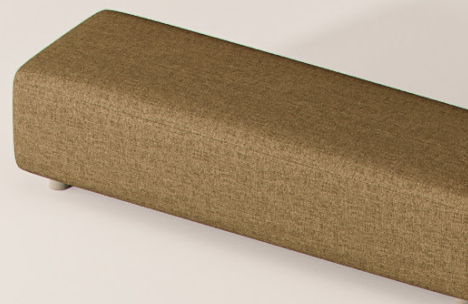
AUTONOMY

ADAPTABILITY

CONTINUITY



FAMILY
hans





FORM IS BORN
FROM THE RELATIONSHIP
BETWEEN VOLUMES

EACH **MODULE**
STANDS AS AN
AUTONOMOUS **ELEMENT**

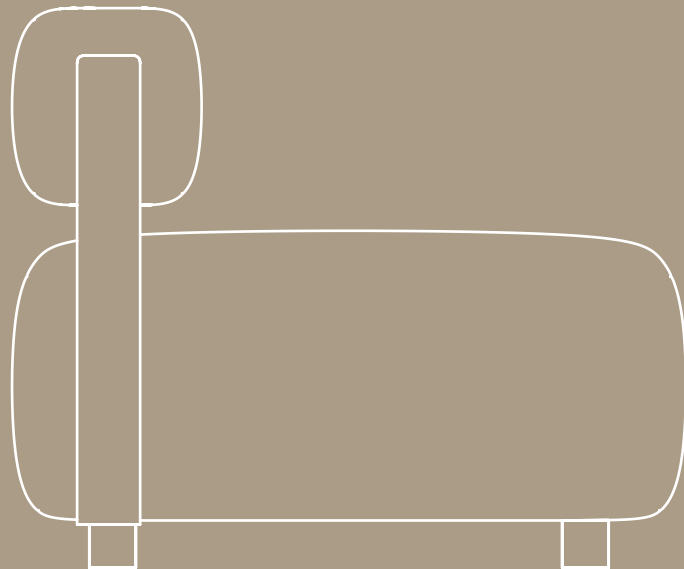


hans

CREATING

SPACE FROM

THE **ESSENTIALS**





A
MODULAR
SYSTEM

THERE IS
NO FIXED
COMPOSITION



hans





VOLUMES THAT

CREATE

INTERIOR **LANDSCAPES**



W 800 x D 800 x H 430
Square



W 800 x D 800 x H 710
Square with back



W 1600 x D 800 x H 430
Rectangular large



W 1600 x D 800 x H 710
Rectangular with back



W 300 x D 800 x H 600
high arm



W 300 x D 800 x H 400
Low arm

SET FURNITURE



W 800 x D 800 x H 430
Round



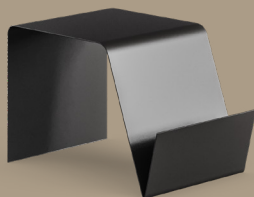
W 1600 x D 550 x H 430
Rectangular small



W 800 x D 800 x H 430
Triangle



W 800 x D 800 x H 710
Triangle with back



W 400 x D 600 x H 400
Magazine stand



W 300 x D 300 x H 570
Side table



Nadia

T. +351 923 229 252 / +34 646 906 589
E. nadia.salier@time28.com

Paulo

T. +33 670 638 460 | +351 915 120 299
E. paulo.santos@time28.com